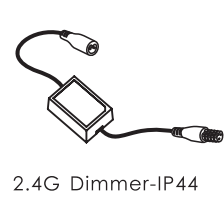
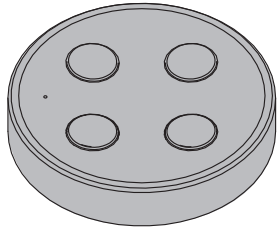
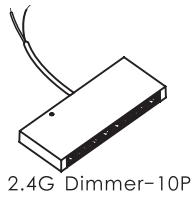


RF2. 4G 4-Button remote control instruction manual

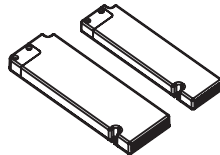
This product uses 2.4G radio frequency technology, fast transmission speed, not easy to be interfered, and compatible with other 2.4G products of our company. The wireless signal is in the ISM frequency band and meets the regulatory requirements of various countries. Equipped with magnetic base and double-sided adhesive tape, it can be easily installed anywhere.



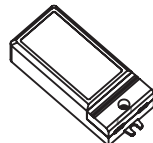
2.4G Dimmer-IP44



2.4G Dimmer-10P



2.4G LED Driver



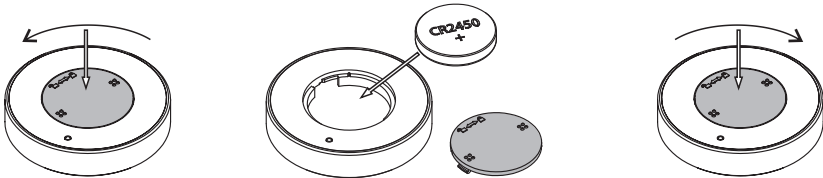
2.4G Switch

Electrical parameters:

Battery: CR2450
 Stand-by Current: <8uA
 Signal Strength: 6db
 Frequency Band: 2.420-2.4835GHz

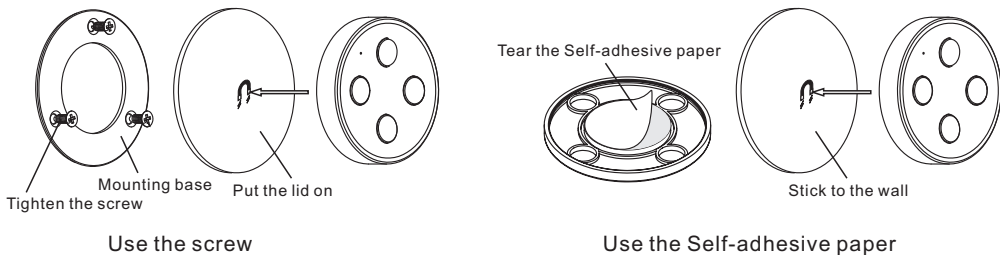


Battery installation:



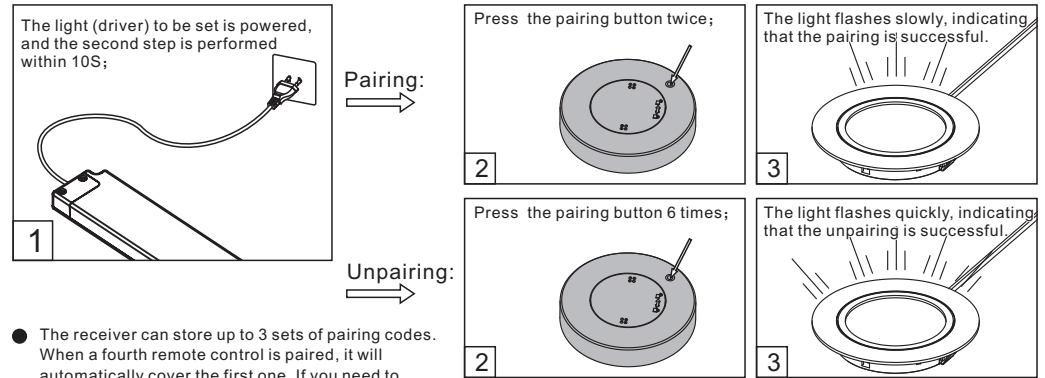
! when the sensor unresponsive, indicate LED flashes or off, you needs replace the battery.

Wall mounting:



Pairing and unpairing:

! The control box and remote-controller must be paired before the first application.



The receiver can store up to 3 sets of pairing codes. When a fourth remote control is paired, it will automatically cover the first one. If you need to connect more controllers, see the next section.

Pairing code replication and recovery:

Each controller has a unique pairing code at the factory. When multiple controllers are required to control one or more lights (drivers), you can pair one controller first and then copy the other controllers to the same pairing code as this controller.

